The background of the entire page is a vibrant green with a series of diagonal lines running from the top-left to the bottom-right. Overlaid on these lines are numerous water droplets of various sizes, giving the impression of rain on a glass surface or a leaf.

ENVIRONMENT & SUSTAINABILITY STATEMENT

CURRIMJEE JEEWANJEE AND
COMPANY LIMITED

CURRIMJEE
SINCE 1890



CONTENTS

Chairman's Message	4
Environment & Sustainability Commitments	6
Environment & Sustainability Objectives	8
Environment & Sustainability Responsibilities	9
Energy Management	9
Procurement	10
Transport Management	11
IT Equipment & E-Products	12
Paper Usage.....	13
Water Usage	14
Waste Management	15
Staff Involvement.....	16
Customers, Stakeholders & Community Involvement	17
Environmental Monitoring.....	18

CHAIRMAN'S MESSAGE



Throughout its long history, Currimjee Jeewanjee & Co. Ltd. has been guided by certain sound principles and values. These have been laid down by our founding fathers, namely to always display the highest standards in our business dealings and the utmost respect for the individual, our society, our country, and at a global level, our planet.

As Currimjee Jeewanjee & Co. Ltd. constantly aims for the long term, we are strongly committed to environmental and sustainable management in all our activities and projects. We endeavour to provide quality products and excellent services in harmony with environmental respect and preservation.

We firmly believe that this perspective is essential for both the creation of enhanced economic value for our stakeholders, as well as contributing to a healthier and sustainable society.

To consolidate our engagement, I am honoured to present the Currimjee Jeewanjee & Co. Ltd.'s Environment and Sustainability Statement, which sets out our key commitments and standards.

Through the statement, we aim to further raise the environmental and sustainability consciousness of all members of Currimjee Jeewanjee & Co. Ltd. and support their environmental and ecological engagements.

Ultimately, as global citizens, we have an obligation to honour our environmental and sustainability responsibilities for the benefit of future generations. I call upon all members of Currimjee Jeewanjee & Co. Ltd. to embrace this statement and adhere to its provisions.

**Bashir A. Currimjee,
GOSK**
Chairman of Currimjee
Jeewanjee & Co Ltd

ENVIRONMENT & SUSTAINABILITY COMMITMENTS

Through leadership, staff involvement and effective management, we shall

Endeavour to preserve the environment and manage our operations in a sustainable manner for the well-being of future generations.

Consider environmental and sustainability aspects as an integral part of our business strategy and operating methods.

Recognise the global challenges due to climate change and diligently honour our responsibility to reduce the environmental impacts of our business operations.

Continually monitor and improve our environmental performance and support customers', employees', partners', the community's and other stakeholders' environmental and sustainability initiatives and progress.



ENVIRONMENT & SUSTAINABILITY OBJECTIVES

In our quest for balanced environmental preservation, sustainable development and business results, we shall

- Achieve and maintain environmental sustainability in our business strategy and projects.
- Conserve and make judicious use of energy, water, materials and other valuable resources through efficient practices.
- Promote utilisation of renewable and clean energy sources and materials as a long term solution against global warming and climate change.
- Minimize our ecological footprints (including carbon footprint) that equates to maximizing value for the stakeholders.
- Consider and preserve terrestrial and marine biodiversity and its ecology in our projects and operations.
- Assist customers in the use of our products and services in a responsible manner.
- Undertake environmental risks evaluations, product and service life cycle assessments, and implement corresponding prevention programs.
- Develop environmental and sustainability improvement plans with clear targets and measure progress annually.
- Adopt and promote the Refuse, Reduce, Reuse and Recycle (4R) approach in managing and valorizing our wastes, including paper, IT/E and plastic waste.
- Promote adoption of eco-friendly consciousness and activities among staff and other stakeholders.
- Comply to and perform better than applicable statutory and regulatory environmental requirements.
- Report our environmental performance in line with the Global Reporting Initiative (GRI).

ENVIRONMENT & SUSTAINABILITY RESPONSIBILITIES

Energy Management

WE SHALL

- Reduce the consumption of electricity in our offices, buildings and when performing our activities.
- Ensure that energy efficiency considerations are included in all aspects of our operations and structural designs.
- Take energy consumption and efficiency into account in the procurement process.
- Seek and foster renewable energy sources through green technologies such as solar water heaters and photovoltaic systems.
- Use air conditioning responsibly and adjust settings for optimal energy use.
- Improve lighting density and effectiveness by using LED lights and other appropriate designs and technologies.
- Promote the usage of natural light in our offices and buildings where applicable.
- Adopt lighting controls for optimal lighting efficiency such as dual technology occupancy sensors, by pass or delay timers, photocells and time clock.
- Carry out regular maintenance of electrical appliances and optimisation studies to ensure efficient consumption of electricity.
- Measure, monitor and reduce our energy consumption and correspondingly our carbon footprint.



ENVIRONMENT & SUSTAINABILITY RESPONSIBILITIES

Procurement

WE SHALL

- Consider environmental dimensions such as eco-friendly certifications and environmental commitments as key criteria for supplier selection and evaluation.
- Ensure that procurement integrates life cycle consideration of materials and end-products so that their final disposal is environmentally sound.
- Generate and adopt an approved list of responsible and environmentally compliant suppliers.
- Favour suppliers offering take back options for obsolete or expired products.
- Maximize post-consumer recycled content where possible, while maintaining packaging and product integrity and compliance with applicable standards.
- Procurement process should consider environmental procurement.
- Ensure that our products are supported by Data Sheets (such as Material Safety Data Sheets - MSDS, Technical Data Sheets - TDS) which document the ecological impact for chemicals concerned.
- Reduce and eliminate products that are proven to be potentially environmentally unfriendly.
- Use safer alternatives to potentially harmful materials, such as purchasing furniture with eco-labels and eco-friendly cleaning materials.

Transport Management

WE SHALL

- Integrate adequate planning, responsible usage, appropriate maintenance and effective monitoring in our transport management systems, including staff commuting, business travel, deliveries and fleet vehicles.
- Switch from energy-intensive and polluting to less environmentally damaging vehicles with optimal capacity for intended usage.
- Reduce transport-related environmental impacts through appropriate travel plans, fuel management and fleet management programmes.
- Reduce the need for transport and travel, e.g. sourcing locally, and restricting to necessity trips only.
- Promote the use of travel alternatives through changing work practices such as e-mail, video-phone & video-conferencing.
- Measure and monitor transport related environmental impacts and set objectives and targets to address these impacts such as fuel efficiency.
- Develop and implement safe and efficient vehicle driving programs for company drivers and staff as applicable.
- Positively influence our stakeholders, including employees, suppliers, partners and customers to consider the environmental aspects like pollution and green house emissions of transportation.



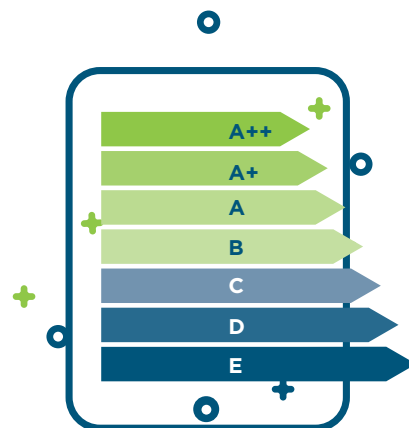
ENVIRONMENT & SUSTAINABILITY RESPONSIBILITIES

IT Equipment & E-Products



WE SHALL

- Use IT office equipment with energy saving features and implement power management software to manage idle time.
- Procure IT equipment with appropriate certifications and qualifications such as ENERGY STAR and EPEAT.
- Ensure that, as equipment is replaced or contracts expire, all printers, copiers, and fax machines have, at minimum, duplex capability.
- Ensure that IT and e-equipment selected are adequately-sized and meet the business needs.
- Strategically distribute printers to support user needs, based on application needs, proximity to users, page volume, people-to-device ratios, cost of ownership, and similar factors.



- Adopt green printing practices such as eco-friendlier ink.
- Seek suppliers and contracts that make provisions for product take-back, appropriate reuse or resource recovery, such as mobile phones, computers, cartridges and printers.

Paper Usage

WE SHALL

- Minimise and monitor the use of paper in the office and promote a paperless approach.
- Replace paper outputs like printed bills with e-billing, adopt online reporting and support customer self-care solutions.
- Promote e-media and e-communication, e.g. e-mail, e-newsletters, e-newspapers and e-magazines. Set printers, copiers, and fax machines to duplex mode as the default setting wherever the equipment capability exists.
- Re-use printing and writing paper, such as using one-sided printed paper for internal draft documents.
- Store and transmit documents electronically and print only if there is a clear reason to do so.
- Adopt unbleached, chlorine-free paper products and select environmentally - certified (ISO 14001) and Forestry Steward Council (FSC) labelled suppliers.

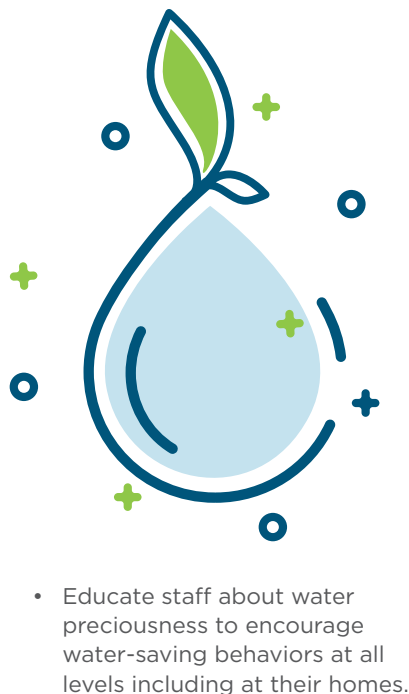


ENVIRONMENT & SUSTAINABILITY RESPONSIBILITIES

Water Usage

WE SHALL

- Apply strategies and procedures to effectively manage potable water use such as installing low flow aerators or flow reducing valves on water points.
- Optimise the use of potable water through the 3R philosophy: Reduce, Reuse and Recycle. Implement rain water collecting systems and re-use systems for purposes such as connecting to flush at washrooms, watering, gardening and cleaning.
- Maintain accurate and complete records of water collection and usage gathered at each site, for reporting purposes, as well as records that describe major water leakages.
- Choose landscaping elements and decorative potted plants that are adapted to our climate and that require minimal water, and select efficient irrigation solutions as applicable, such as drip-irrigation instead of traditional sprinklers.



- Educate staff about water preciousness to encourage water-saving behaviors at all levels including at their homes.

Waste Management

WE SHALL

- Strive to create a company free of non-reusable & non-recyclable materials.
- Establish an inventory of our wastes based on life cycle assessment and adopt the 4R approach for managing our wastes.
- Establish, use and periodically update an approved list of responsible waste recycling and disposal suppliers.
- Promote pollution prevention by sending recyclable waste such as electronic wastes, empty ink cartridges, used papers and plastic bottles to approved suppliers for responsible recycling and disposal, and maintain complete records for reporting.
- Ensure appropriate disposal procedure of hazardous waste is established and maintained, such as batteries, fluorescent tubes and technical equipment.
- Re-use constituent elements from obsolete IT equipment.
- Educate staff about global and local issues of pollution by solid and liquid wastes and promote adoption of 4R approach at all levels, including at their homes.
- Generate and promote the utilization of compost using organic wastes as applicable.



ENVIRONMENT & SUSTAINABILITY RESPONSIBILITIES

Staff Involvement

WE SHALL

- Ensure that our staff have the knowledge, skills, and equipment to conduct work in a safe and environmentally responsible manner.
- Provide our staff with relevant environment and sustainability related training and awareness.
- Mitigate and manage environment, health and safety risks to our staffs, and the communities in which we operate, by employing environmentally safe technologies, implementing appropriate procedures and preparing emergency plans.



- Ensure that our staff strictly comply with all applicable environmental, sustainability and regulatory requirements.
- Involve our staff in the development and diligent adherence to environmental and sustainability policies for greater commitment and improved performance.
- Support our staff with respect to their environmental and sustainability initiatives and participation at individual, team, family and community level.

Customers, Stakeholders and Community Involvement

WE SHALL

- Partner with suppliers, contractors and other interested parties to improve their environmental performance and promote a sustainable agenda.
- Use local labour and materials where available to help the community and promote sustainability initiatives locally.
- Communicate appropriate environmental, sustainability, health and safety information on our products and services to customers and the public.
- Advise and assist customers in the responsible use of our products and services.
- Communicate our environmental policy and practices to suppliers, customers and other interested parties.
- Create staff awareness about the preservation of our unique native and endemic terrestrial and marine biodiversity through conservation projects.



ENVIRONMENT & SUSTAINABILITY RESPONSIBILITIES

Environmental Monitoring

WE SHALL

- Comply resolutely with relevant and applicable environmental regulatory requirements.
- Set targets for process and company-wide environmental and sustainability aspects.
- Review environmental and sustainability policies, objectives and results at least annually.
- Carry out periodic environmental assessment of our companies and related activities.
- Continually improve and monitor our environmental and sustainability performance, especially in light of advances in technology and environmental science.
- Voluntarily and openly publish our environmental performance in a Sustainability report in line with the international standard of Global Reporting Initiative (GRI).



The background of the entire page is a close-up photograph of green grass blades. Numerous water droplets of various sizes are scattered across the blades, creating a fresh and natural aesthetic. The lighting is soft, highlighting the texture of the grass and the clarity of the water.

Currimjee Jeewanjee and Company Limited

38, Royal Street, Port Louis 11602, Mauritius
T: +230 650 6200
environment@currimjee.com
www.currimjee.com